



# HP Certified Professional

## ProCurve Accelerated ASE Mobility Exam (HP0-Y19)

### Exam Preparation Guide

## Purpose

The intent of this guide is to set expectations about the content and the context of the exam and to help candidates prepare for it. Recommended training to prepare for this exam can be found at The Learning Center. This guide may contain supplementary references relevant to the topics covered by the exam.

## Audience

This exam is for systems engineers and network engineers with 1 year of experience designing intermediate switched and basic routing networks.

Examples of job roles include:

- Reseller and customer network specialists
- System Engineers
- Network Engineers
- HP Field System Engineers
- HP Services Technical Support and Field Services

## Relevant Certifications

After passing this exam, your achievement may be applied toward more than one certification. To determine which certifications will be credited with this achievement, log into The Learning Center and view the certifications listed on the exam's More Details tab. You may be on your way to achieving additional HP certifications.

## Exam Details

The following are details about the exam:

- **Number of items:** 65
- **Item types:** multiple choice and drag-and-drop
- **Exam Time:** 90 minutes

- **Passing Score:** 72%
- **Reference Material:** No on-line or hard copy reference material will be allowed at the testing site

## Comments on the Exam

During the exam, participants can make specific comments about the items (i.e., accuracy, appropriateness to audience, etc). HP welcomes these comments as part of our continuous improvement process.

## Exam Content

The following testing objectives represent the specific areas of content covered in the exam. Use this outline to guide your study and to check your readiness for the exam. The exam measures your understanding of these areas.

<b>Objective</b>
<b>AEF</b>
Perform initial configuration tasks on ProCurve switches including the assignment of IP addresses
<ul style="list-style-type: none"> <li>• Use the CLI, menu and web interfaces to configure and monitor ProCurve switches</li> </ul>
<ul style="list-style-type: none"> <li>• Configure and monitor VLANs on ProCurve switches</li> </ul>
<ul style="list-style-type: none"> <li>• Use ProCurve Manager Plus to manage a ProCurve network</li> </ul>
<ul style="list-style-type: none"> <li>• Enable high-availability and high-capacity features including link aggregation, Spanning Tree, and meshing on ProCurve switches</li> </ul>
<ul style="list-style-type: none"> <li>• Implement wide area network connections between ProCurve switches</li> </ul>
<ul style="list-style-type: none"> <li>• Deploy static and dynamic routing features on ProCurve switches</li> </ul>
<ul style="list-style-type: none"> <li>• Enable traffic prioritization features on ProCurve switches</li> </ul>
<ul style="list-style-type: none"> <li>• Configure ProCurve wireless access devices and wireless access controls in a ProCurve network</li> </ul>
<ul style="list-style-type: none"> <li>• Troubleshoot ProCurve devices</li> </ul>
<ul style="list-style-type: none"> <li>• Design a network based on ProCurve devices</li> </ul>
<ul style="list-style-type: none"> <li>•</li> </ul>

---

**Objective**


---

**Security**


---

- ProCurve Security Overview
  - ProCurve Device Management Security
  - ProCurve Network Protection
  - ProCurve Network Access Control Security
  - ProCurve Troubleshooting
  -
- 

**BPRAN**


---

- Introducing the Resilient, Adaptive Network
  - Hardware Component Resilience
  - Providing Redundant Links and Gateways
  - Designing and Configuring IP Networks
  - OSPF Routing in the Adaptive Network
  - Delivering Quality of Service (QoS)
  - Supporting IP Multicast
  -
- 

**Mobility**


---

- Explain the advantages that ProCurve Networking's Adaptive Edge Architecture provides for organizations and their mobile users
  - List the features of the AP 420 and AP 530
  - Describe the features of the ProCurve Wireless LAN System, which includes:
    - Wireless Edge Services Module
    - Redundant Wireless Services Module
    - Wireless services-enabled switch
    - Radio ports (RPs)
    - RP licenses
  - Describe the difference between 802.11 authentication and supplemental authentication
-

**Objective**

---

- Explain how various factors, including Effective Isotropic Radiated Power (EIRP) and receiver sensitivity, affect coverage
  - Describe how Request to Send/Clear to Send (RTS/CTS) is used to avoid contention in a wireless network
  - List the network management and security features that ProCurve Mobility Manager (PMM) provides
  - Assess the purpose of a wireless network and users' requirements for using the wireless network
  - Isolate problems to identify where they are occurring
-

## Training

Recommended training to prepare for this exam is accessible from this exam's page in The Learning Center. See the exam attachment, Supporting courses, to view and register for the courses. You are not required to take the associated courses; however, HP strongly recommends that you complete the training and thoroughly review all course materials and documents before taking the exam. Sufficient on-the-job experience may also be required.

Studies conducted by HP and Prometric show that a combination of course attendance, self-study and on-the-job experience maximizes the likelihood of passing the exam on the first attempt.

## Additional Study References

This section lists courses and documents that can help you acquire additional knowledge and prepare for the exam. You must also gain the practical experience outlined in this guide.

Reference Type/ Title	Order Number	Source
Product Manuals and other support documents		<a href="http://www.procurve.com">www.procurve.com</a>

## Exam Registration

To register for this exam, please go to exam's description in The Learning Center.

## Conclusion

HP wishes you success in the HP Certified Professional Program and in passing the exam for which you are preparing.

## AEF Sample Test Items

The sample test items give you a preview of what the actual test items will look like. It is important to note that these items WILL NOT be on the exam itself. However, they are representative of the actual items, and they should help you become familiar with the format and complexity of the test items. These sample test items are not a check for readiness.

- 1) The menu interface enables you to perform many configuration and monitoring tasks on ProCurve switches. What tasks can be performed at the main menu? (Select TWO.)
  - A. view event log
  - B. access the CLI
  - C. enable port trunking
  - D. enable spanning tree
  - E. change VLAN port assignments
  
- 2) Why are edge-centric networks more scalable than core-centric networks?
  - A. because higher port densities on edge devices enable more users to connect
  - B. because edge-centric networks reduce network traffic by placing resources closer to users
  - C. because edge-centric networks provide users with faster edge ports than core-centric networks
  - D. because intelligence and decision-making capacity are added whenever a new switch is deployed in an edge-centric network.
  
- 3) You must enter the global configuration level at the CLI of an HP ProCurve switch, but can remember only that the command for this task begins with "co." How can you access help to learn the rest of the command?
  - A. Type "co" and <Tab>
  - B. Type "co" and <Enter>
  - C. Type "help co" and <Enter>
  - D. Type "co:help" and <Enter>

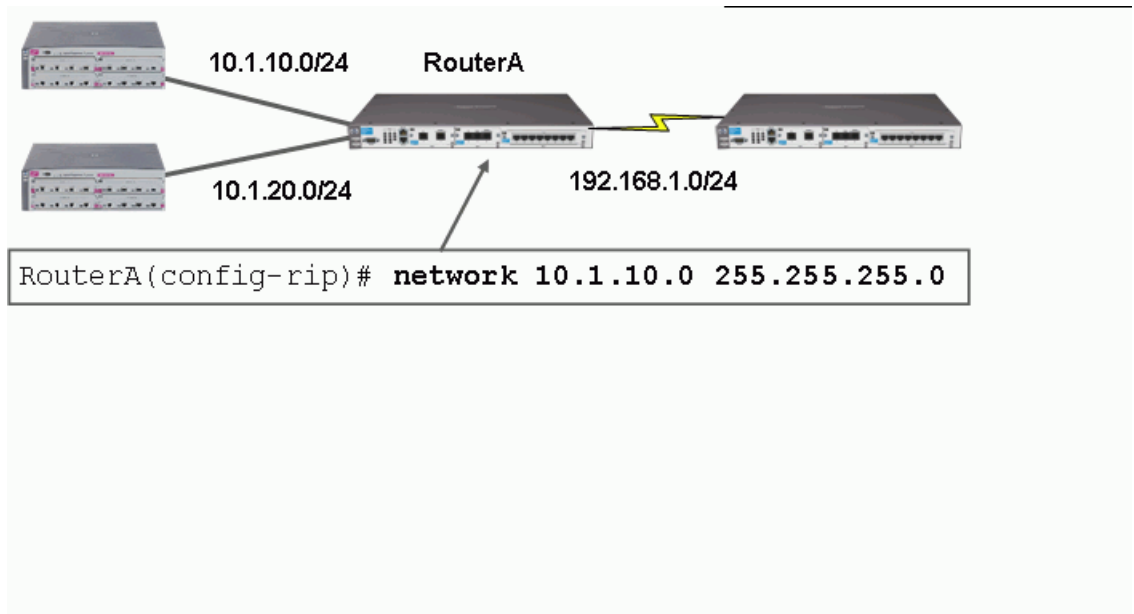
- 4) For security reasons, you must segment the network at a law office into separate networks for legal and clerical personnel. Which technology supported by ProCurve switches enables you to fulfill this requirement?
- A. VLANs
  - B. spanning tree
  - C. switch meshing
  - D. 802.1p prioritization
- 5) You are configuring a new ProCurve Switch 5406zl at a customer's remote location. The customer's IT staff will manage the switch remotely from an office in another location. Managers are members of VLAN 88 and use VLAN 1 for management. What configuration step is necessary to ensure that IT staffers can access the switch's management interface?
- A. Enable IP routing to ensure the switch can forward between VLANs.
  - B. Ensure that the uplink port that connects the switch to other locations is a member of VLAN 1.
  - C. Ensure that the uplink port that connects the switch to other locations is a member of VLAN 88.
  - D. Use the ip authorized-managers command to ensure that members of VLAN 88 can access the switch.
- 6) What aspect of the ProCurve Adaptive EDGE architecture is embodied in ProCurve Manager?
- A. Security Above All
  - B. Control to the Edge
  - C. Control for the Desktop
  - D. Command from the Center
- 7) After you configure a two-port trunk between two ProCurve Switch 5406zl switches, traffic analysis reveals that only one of the links is being used to full capacity. The other link is operating well below capacity. Which statement explains this analysis?
- A. Load balancing is only effective when trunks include four or more links.
  - B. You incorrectly configured port trunking and must reconfigure the port trunk.
  - C. This behavior is normal because a port trunk does not use adaptive load balancing.
  - D. The second link is in standby mode and will only be used to full capacity if the first link fails.

- 8) You are designing a partially connected HP Switch Mesh to improve the capacity and availability of a customer network. How many ProCurve 5406zl switches can the partial mesh include?
- A. 6
  - B. 8
  - C. 18
  - D. 24
- 9) You login to a ProCurve 7102dl secure router and are presented with the following prompt:
- ProCurveSR7102dl>
- Which security mode are you in?
- A. basic
  - B. manager
  - C. privilege
  - D. global config
- 10) Which WAN protocols are supported on the ProCurve Secure Router 7000dl series? Select TWO.
- A. PPP
  - B. SDLC
  - C. Async
  - D. LAP-B
  - E. Frame Relay
- 11) Which statements describing the functions of a router are true? Select THREE.
- A. It provides routes to other networks.
  - B. It filters traffic based on Layer 3 IP addresses.
  - C. It blocks redundant links to ensure a loop-free topology.
  - D. It always retransmits broadcasts received from one subnet to each other connected subnet.
  - E. It converts the format of frames received on a LAN interface when forwarding on a WAN interface.

12) Which protocols are considered Interior Gateway Protocols? Select TWO.

- A. RIP
- B. EGP
- C. BGP
- D. IGMP
- E. GVRP
- F. OSPF

13) Review the Exhibit below.



Which statement describes the result of issuing the network command on the ProCurve Secure Router 7203dl labeled RouterA?

- A. It allows the route to be redistributed to OSPF.
- B. It adds a direct route to the network in the local routing table.
- C. It allows other RIP-enabled interfaces to advertise the network.
- D. It identifies a network that is reachable through the next-hop router.

- 14) The network administrator at a customer site wants to ensure that users in VLAN 70 cannot establish a high forwarding priority for their traffic. All of the users in VLAN 70 are connected to a ProCurve Switch 3500yl-48G. How can you configure the switch to address the administrator's need?
- A. Disable support for port-based prioritization on VLAN 70.
  - B. No configuration is available that will address this problem.
  - C. Configure the switch to filter all traffic from VLAN 70 that includes an 802.1Q tag.
  - D. Configure an acceptable priority for VLAN 70 that will override the users' priority settings.
- 15) A customer's network requires Power over Ethernet to support wireless access points throughout the company's warehouse. The customer is interested in a range of switch types and port capacities. Which group of switches could be recommended?
- A. 4100gl, 5300xl and 6108
  - B. 2600-PWR, 3500yl and 5300xl
  - C. 2600-PWR, 5400zl and 6400cl
  - D. 6108, 5400zl and 6200yl
- 16) What is an important difference between data-driven IGMP and IGMP snooping?
- A. There is no difference between data-driven IGMP and IGMP snooping. They describe the same technology.
  - B. Data-driven IGMP is used by a ProCurve switch that is acting as a querier; all other switches use IGMP snooping.
  - C. A switch that uses data-driven IGMP floods multicast traffic until it learns where the receivers are; IGMP snooping causes the switch to filter until it learns the locations of receivers.
  - D. A switch that uses data-driven IGMP filters multicast traffic until it learns where the receivers are; IGMP snooping causes the switch to flood the traffic until it learns the locations of receivers.

- 17) You are installing ProCurve 3500yl-48G switches at a customer site that will use IGMP? All ProCurve switches will participate in querier elections and may act as IGMP queriers. What configuration steps are necessary to enable one of these switches to play this role?
- A. No configuration step is necessary.
  - B. Bridge priority must be set to "high" and an IP address must be assigned to the switch's primary VLAN.
  - C. IP routing must be enabled and a join message issued for every multicast in which the switch will participate.
  - D. IGMP must be enabled and an IP address must be assigned to every VLAN on which the switch will potentially act as querier.
- 18) While designing a wireless network for a customer, you decide to use the less populated 5 GHz frequency band to avoid interference and maximize throughput. Which wireless LAN standard would be the appropriate choice for this network?
- A. 802.11a
  - B. 802.11b
  - C. 802.11g
  - D. 802.11i
- 19) It is very important to use non-overlapping radio channels when building an 802.11-based wireless network because channel overlap adversely affects network performance. How many non-overlapping channels are there in 802.11b and 802.11g networks?
- A. 2
  - B. 3
  - C. 4
  - D. 9
- 20) While troubleshooting a connectivity issue with a ProCurve switch, you decide to examine the switch system log. Which command will enable you to examine all log entries since the last power cycle?
- A. show log -r
  - B. show log -a
  - C. show log -p
  - D. show log -pc

- 21) A Layer 2 switch receives a frame. Which conditions could cause the switch to flood the frame? Select TWO.
- A. source address is not in its forwarding table
  - B. destination address is not in its forwarding table
  - C. frame is destined for an unknown Layer 3 protocol
  - D. destination address is either a broadcast or multicast address
  - E. destination address is on the same port as the source address
- 22) During a planning meeting for a new ProCurve solution, a customer asks you to explain the primary difference between Layer 3 switches and Layer 2 switches. Which statement describes this difference?
- A. Layer 3 switches typically have a higher port density than Layer 2 switches.
  - B. Layer 3 switches can be configured with IP addresses, Layer 2 switches cannot.
  - C. Layer 3 switches are usually placed at the access layer, Layer 2 switches are usually placed at the distribution layer.
  - D. Layer 3 switches can forward traffic using information in the Layer 3 header, Layer 2 switches forward traffic using information in the Layer 2 header.
- 23) You plan on connecting a remote campus to the main campus using fiber where the distance between them is 5 kilometers. Which Gigabit Ethernet technologies could be used for this scenario? (Select two.)
- A. 1000Base-T
  - B. 1000Base-LX
  - C. 1000Base-LH
  - D. 1000Base-SX
  - E. 1000Base-CX
- 24) Which 10 Gigabit Ethernet specification supports a maximum distance of 15 meters?
- A. 10-GbE LR
  - B. 10-GbE SR
  - C. 10-GbE ER
  - D. 10-GbE CX4

- 25) You are configuring ProCurve switches with Class B IP addresses. What is the natural mask for a Class B IP address?
- A. 255.0.0.0
  - B. 255.255.0.0
  - C. 255.255.255.0
  - D. 255.255.255.255
- 26) Which device is traditionally used to segment broadcast domains in a network?
- A. router
  - B. bridge
  - C. switch
  - D. multi-homed server

## AEF Answers:

1 A,B

2 D

3 A

4 A

5 B

6 D

7 C

8 B

9 A

10 A,E

11 A,B,E

12 A,F

13 C

14 D

15 B

16 D

17 D

18 A

19 B

20 B

21 B,D

22 D

23 B,C

24 D

25 B

26 A

## Security Sample Test Items

The following examples represent the types of items and question formats that you could see on the exam. These are generic samples and do not reflect the content being tested.

1. You are explaining to a customer the benefits of using local security within their HP ProCurve networking environment. Which are benefits? Select TWO.
  - A. It can be maintained by the network LDAP compliant server
  - B. It is effective for a customer with few switches
  - C. Usernames/passwords can be replicated from one switch to another switch
  - D. It uses an alternative authentication method (like RADIUS)
  - E. It is easy to implement because this strategy does not rely on external source(s) for authentication
  
2. In an HP ProCurve network implementation for a small business environment, what functionality does an administrator with operator level access have access to? Select TWO.
  - A. Status and Counters menu
  - B. Download OS menu option
  - C. CLI config level
  - D. event log
  - E. Reboot Switch menu option

3. Which tasks are required for managing HP ProCurve switches using SNMP version 3? Select TWO.
  - A. create Authorized IP Managers
  - B. create SNMP version 3 Users
  - C. assign Users to Communities
  - D. assign Users to Groups
  - E. configure SNMP traps
  
4. A customer wants to use Secure Shell (SSH) to securely connect to their switches. After connecting to the HP ProCurve switch, what methods can be used to authenticate this user? Select THREE.
  - A. local security
  - B. LDAP
  - C. RADIUS
  - D. Active Directory
  - E. TACACS+
  - F. web management
  - G. serial console
  
5. Which statements are true when implementing SSL on HP ProCurve switches? Select TWO.
  - A. The switch authenticates to the client's web browser via SSL 3.0 or TLS 1.0.
  - B. The client authenticates to the switch via Certificate.
  - C. SSL traffic is encrypted using 3DES, DES, or RC4.
  - D. The switch authenticates to the client via RADIUS or TACACS+.
  - E. The switch authenticates to the client via RADIUS using SSL 3.0 or TLS 1.0.

6. A customer uses asymmetric encryption to set up the session key and uses symmetric encryption for the conversation of an interoffice application. What encryption scheme best describes this implementation?
- A. International Data Encryption Algorithm (IDEA)
  - B. Rivest Cipher 4 (RC4) encryption
  - C. asymmetric encryption
  - D. Hybrid encryption
7. A customer recently implemented an encryption scheme for a specialized application that uses a public key for encryption and a private key for decryption of data communications. This best describes which encryption method?
- A. symmetric encryption
  - B. asymmetric encryption
  - C. Hybrid encryption
  - D. Rivest Cipher 4 (RC4) encryption
8. A user has configured his network to allow Single Login security access, and wants to grant access to multiple resources without the need of a userid/password request for each resource. Which solution will accomplish this?
- A. RCA with digital certificates
  - B. PKI with digital certificates
  - C. PKI Fingerprint authentication
  - D. Digital Fingerprint authentication

9. An airline wants to provide PCs with Internet access in their airport lounges. The IT manager wants to prevent customers from unplugging a PC and plugging in their own laptop computer into the network port to gain access to the Internet. What is the most secure solution to offer?
- A. IEEE 802.1X with MAC address lockdown
  - B. port security
  - C. IEEE 802.1X
  - D. open/guest VLANs
10. A network administrator is implementing 802.1X authentication on all edge HP ProCurve 2600 and 2800 series switches and configures each switch with the IP addresses of two RADIUS servers. What is the primary benefit of configuring multiple RADIUS servers?
- A. If the primary RADIUS server rejects an authentication request from the switch, the switch sends the request to the second server.
  - B. When using multiple directory servers, authentication requests can be redirected to a RADIUS server based on the authentication method used by 802.1X-aware devices.
  - C. If the primary RADIUS server is unreachable, the switch sends requests to the second server.
  - D. One RADIUS server can be used for authentication and the second server can be used for accounting.
11. Which EAP types are supported by HP ProCurve switches? Select TWO.
- A. EAP-TTLS
  - B. EAP-MD5
  - C. PEAP
  - D. LEAP
  - E. EAP-TLS

12. What is the benefit of the Open VLAN feature on HP ProCurve switches? It enables an administrator to provide \_\_\_\_\_.
- A. limited network access for users that have 802.1X supplicant software but do not have valid user credentials
  - B. unlimited network access for users that have 802.1X supplicant software installed but do not have valid user credentials
  - C. unlimited network access for users that have valid user credentials but do not have 802.1X supplicant software installed
  - D. limited network access for users that do not have 802.1X supplicant software or valid user credentials
13. A large university wants to deploy 802.1X port-based security throughout their network. The network administrator decides to use a combination of MAC and web authentication on the access-layer 5400zl switches. What is the primary benefit of web authentication?
- A. It provides the same benefits of port-level 802.1X authentication but without the need for an external RADIUS server.
  - B. It allows wireless users connected to a single access point (AP) to be dynamically assigned to different VLANs based on the client's credentials.
  - C. It brings many of the security benefits of port-level 802.1X authentication without additional client software.
  - D. It can be configured to provide 'unauthorized' users with limited access to network resources.

14. You are the network administrator for ProCurve University and you are using ProCurve 2600 series switches to provide edge connectivity. Recently, you have implemented a policy that prevents students on academic probation from accessing the network from certain locations on campus. One of the students on probation calls to complain that his laptop can no longer connect to the network from the student lounge. Yet, he still has access from the library. Why was he unable to access the network from the lounge?
- A. MAC Lockdown has been configured on the switch ports which connect to the student lounge denying him access to any port on that switch.
  - B. MAC Lockout has been configured on the switch which connects to the student lounge locking him out of every port on the switch.
  - C. Port security has been enabled on the switch port which connects to the student lounge, locking him out of that port until his MAC address is cleared from the switch's memory.
  - D. MAC Authentication has been enabled on the switch port which connects to the student lounge, locking him out of that port until his MAC address is cleared from the switch's memory.
15. The IT administrator of a large university tells you that there are a number of print servers connected to unsecured network access ports and that she wants to prevent students from connecting their laptops to these ports. Further, given the large number of print servers, she would like to centrally manage the security for these devices. What technology would you recommend for this situation?
- A. MAC Authentication
  - B. Web Authentication
  - C. 802.1X Authentication
  - D. Port Security

16. Which access right is granted to an SNMPv3 user if that user is assigned to the ManagerPriv group?
- A. ManagerEdit
  - B. ManagerAllView
  - C. FullDiscoveryView
  - D. ManagerReadView
  - E. OperatorWriteView
17. Which statements describing SSL operations on the ProCurve Switch 3500yl series are correct? (Select two.)
- A. Unlike a CA-signed certificate, a self-signed certificate has no expiration date.
  - B. The public and private keys used for SSL are separate from those used for SSH.
  - C. If a self-signed certificate is used, a Web browser initiates a challenge to verify the identity of the signer of the certificate.
  - D. With SSL enabled, if you attempt to access the switch using HTTP, the Web browser is automatically redirected.
  - E. As part of the process of generating a self-signed certificate, you specify a common name that can be the switch's IP address or DNS name.
18. Which Port Security learn mode allows some MAC addresses to be predefined, while allowing other MAC addresses to be dynamically learned?
- A. static
  - B. configured
  - C. continuous
  - D. port-access
  - E. limited-continuous

19. What is the role of a NAS in the AAA security framework?

- A. A Network Access Server contacts an AAA server to validate user credentials.
- B. A Network Accounting Server contains the logs that account for a user's activities.
- C. A Network Authentication Server stores AAA authorized user names and passwords.
- D. A Network Authorization Server provides user names and passwords for an AAA-compliant LDAP server.

20. You have just installed two ProCurve 3500yl switches, one on the second floor and one on the third floor of your office. You are using 802.1X for port-access authentication. All users have an 802.1X supplicant installed on their computers and you have configured a RADIUS server with a remote access policy for each floor. Shortly after physically connecting the computers, users on the second floor report that they cannot access any network resources. You can ping the RADIUS server from both switches, but when you check the RADIUS server's log, you see that authentication requests coming from the second floor switch are being denied because they are coming from an unauthorized client.

Why are the second floor users unable to connect to the network?

- A. The second floor switch has not been configured as a client on the RADIUS server.
- B. The second floor computers are using the wrong EAP type for authentication with the RADIUS server.
- C. The shared secret configured on the second floor switch does not match the shared secret configured on the RADIUS server.
  - E. IP routing has not been enabled on the second floor switch; therefore no authentication requests can reach the RADIUS server.

## Security Answers:

- |     |          |
|-----|----------|
| #1  | B. E.    |
| #2  | A. D.    |
| #3  | B. D.    |
| #4  | A. C. E. |
| #5  | A. C.    |
| #6  | D.       |
| #7  | B.       |
| #8  | B.       |
| #9  | A.       |
| #10 | C.       |
| #11 | B. E.    |
| #12 | D.       |
| #13 | C.       |
| #14 | B.       |
| #15 | A.       |
| #16 | D.       |
| #17 | B. E.    |
| #18 | A.       |
| #19 | A.       |
| #20 | A.       |

## BPRAN Sample Test Items

The following examples represent the types of items and question formats that you could see on the exam.

1. At a customer site, you upload software version K.12.43 to the primary flash area of a ProCurve Switch 8212zl. When is this file synchronized to the switch's standby management module?
  - A. when the system is next restarted
  - B. within seconds after the upload is complete
  - C. during the next management module switchover
  - D. when you enter the **redundancy synchronize** command
  
2. When designing a redundancy solution that combines MSTP and VRRP, what is one method for ensuring the Owner and Backup router for all VRIDs can exchange advertisements if the link between them fails?
  - A. Enable BPDU-guard on all edge switches.
  - B. Make all switch-to-switch links tagged members of all VLANs.
  - C. Configure one of the routers to be Root Bridge for all MSTP instances.
  - D. Configure all edge switches to allow VRRP advertisements to be sent and received over blocked links.

3. What is the primary result of the following command entered at the CLI of a ProCurve Switch 5406zl?

```
5406zl(config)#spanning-tree priority 2
```

- A. The switch's CIST priority is set to 8192.
  - B. The switch can never be elected Root Bridge of the CIST.
  - C. The switch will be elected Root Bridge of MST instance 2.
  - D. The switch is configured to be Backup Root of all MST instances defined on the switch.
4. How many interface modules are included with the base system for a ProCurve Switch 8212zl?
- A. 0
  - B. 4
  - C. 8
  - D. 12

- Click the Task button.

Arrange the steps necessary to enable RIP on the Switch 5406zl and then enable RIP for VLAN 22.

Drag and drop the boxes from right to left.

**Arrange the steps in order.**

Order	Steps in Order
1	(place step one here)
2	(place step two here)
3	(place step three here)
4	(place step four here)

**Steps**

- vlan 22 ip addr 10.1.22.1/24
- router rip
- ip routing
- vlan 22 ip rip

Done

- What is the effect of the following command issued at the CLI of a ProCurve Switch 3500yl?

```
3500yl(config)#ip route 0.0.0.0/0 172.16.15.4
```

- The switch will not accept any advertised OSPF routes from the neighbor at 172.16.15.4.
- The switch will drop all traffic destined for addresses learned from RIP neighbor 172.16.15.4.
- The switch will use loopback interface 172.16.15.4 as a black hole for traffic denied by ACLs.
- The switch will use 172.16.15.4 as the gateway to networks not specified in other IP route table entries.

7. A ProCurve Switch 8212zl must evaluate two routes to the same destination network. One route was learned through OSPF. The other route is a static route. How will the switch forward traffic toward this network?
- A. using both routes
  - B. using the static route
  - C. using the OSPF route
  - D. using the route it learned first
8. What is the effect of the following command entered at the CLI of a ProCurve Switch 8212zl?

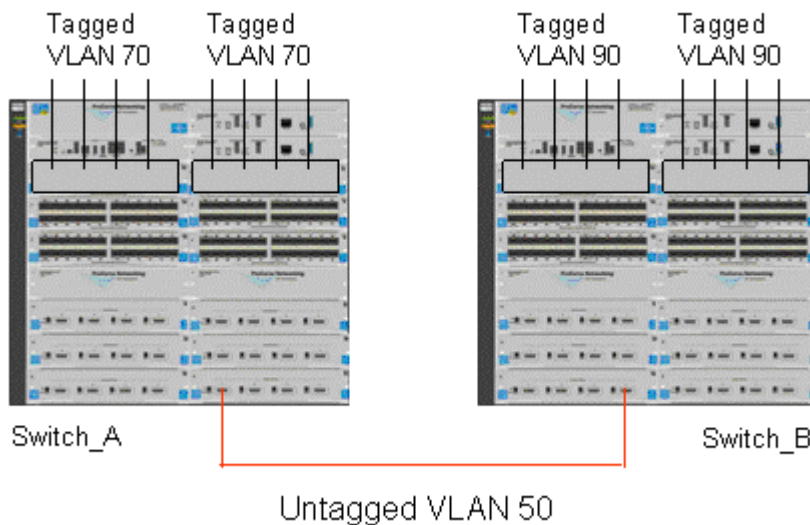
```
8212zl(ospf)#area 4 stub 2
```

- A. The 8212zl will redistribute all RIP routes to area 4 routers.
- B. The 8212zl will include each area 4 network in LSAs distributed to backbone routers.
- C. The 8212zl will summarize all area 4 routes in advertisements to the backbone area.
- D. The 8212zl will summarize all external networks as the default route in advertisements to area 4.

9. Click the Exhibit button.

In this network, all hosts in VLANs 70 and 90 insert IEEE 802.1p priority markers. How can you ensure that priorities are maintained from end-to-end?

- A. Implement identical priority settings on both switches.
- B. Make the link between Switch\_A and Switch\_B a tagged member of VLAN 50.
- C. Make the link between Switch\_A and Switch\_B an untagged member of all VLANs.
- D. Define a network-wide QoS VLAN that will include all ports that require prioritization settings.



10. In a PIM-Dense routing domain, which router is the root node of a multicast distribution tree?
- A. Bootstrap Router
  - B. Rendezvous Point
  - C. first router to receive an IGMP join
  - D. router closest to the multicast source
11. You must configure IP multicast on a ProCurve Switch 5406zl. Which feature must be enabled before you enable multicast routing globally?
- A. PIM
  - B. RIP
  - C. DVMRP
  - D. IP routing

## BPRAN Answers:

1. B
2. B
3. A
4. A
5. ip routing  
router rip  
vlan 22 ip addr 10.1.22.1/24  
vlan 22 ip rip
6. D
7. B
8. D
9. B
10. D
11. D

## Mobility Sample Test Items

The following examples represent the types of items and question formats that you could see on the exam. These are generic samples and do not reflect the content being tested.

1. You are using Normal mode on the Wireless Edge Services Module and have configured 16 wireless LANs (WLANs). The Wireless Edge Services Module has adopted 10 Radio Port (RP) 230s. Which SSIDs will the Wireless Module assign to each basic service set identifier (BSSID) on the adopted RPs' 802.11 b/g radio?
  - A. The Wireless Module assigns the SSIDs for WLANs 1, 2, 3, and 4 to the first BSSID; the SSIDs for WLANs 5, 6, 7, and 8 to the second BSSID; the SSIDs for WLANs 9, 10, 11, and 12 to the third BSSID; and the SSIDs for WLANs 13, 14, 15, and 16 to the fourth BSSID.
  - B. The Wireless Module assigns the SSID for one WLAN to each of the 16 BSSIDs supported by the RP 230.
  - C. The Wireless Module assigns the SSIDs for two WLANs to each of the 8 BSSIDs supported by the RP 230. The SSIDs for WLANs 1 and 9 are assigned to the first BSSID; the SSIDs for WLANs 2 and 10 are assigned to the second BSSID; the SSIDs for WLANs 3 and 11 are assigned to the third BSSID; the SSIDs for WLANs 4 and 12 are assigned to the fourth BSSID; and so on.
  - D. The Wireless Module assigns the SSIDs for WLANs 1, 5, 9, and 13 to the first BSSID; the SSIDs for WLANs 2, 6, 10, and 14 to the second BSSID; the SSIDs for WLANs 3, 7, 11, and 15 to the third BSSID; and the SSIDs for WLANs 4, 8, 12, and 16 to the fourth BSSID.

2. A Wireless Edge Services Module cannot adopt any of the RPs that are attached to an infrastructure switch, but it has adopted the RPs that are attached to the wireless services-enabled switch. What could be the problem?
  - A. Auto-provisioning is not enabled on the infrastructure switch.
  - B. The Radio Port VLAN is not tagged on the Wireless Module's downlink port.
  - C. The Radio Port VLAN is not tagged on the inter-switch links between the infrastructure switch and the wireless services-enabled switch.
  - D. The Radio Port VLAN is tagged on the Wireless Module's uplink port and downlink port, but it should only be tagged on the downlink port.
  
3. You want to use ProCurve Mobility Manager (PMM) to configure WLANs on the ProCurve Access Point (AP) 530s. Which WLAN security setting can you configure through PMM v2.0?
  - A. WPA-PSK
  - B. MAC authentication
  - C. WEB authentication
  - D. Internal RADIUS server settings
  
4. How many virtual LANs (VLANs) does the ProCurve AP 530 support?
  - A. 32 per radio
  - B. 64 per radio
  - C. 128 per radio
  - D. 256 per radio
  
5. Which ProCurve Mobility Manager (PMM) feature allows you to view 4 information displays at a glance?
  - A. Wireless History tab
  - B. Wireless Metrics tab
  - C. Wireless Stations tab
  - D. Wireless Stations History tab

6. Which devices are displayed in the bottom gutter of the PMM Edit View window for a custom group in ProCurve Manager Plus (PCM+)?
- A. all devices that are managed by PCM+
  - B. all devices that are managed by PCM+ and are part of the custom group
  - C. all devices that are managed by PCM+, are part of the custom group, but are not yet placed on the floor plan
  - D. all devices that are managed by PCM+, are part of the custom group, and have enabled radios
7. Your company's wireless network enforces 802.1X authentication with usernames and passwords. A user calls and states that when she tries to connect to the wireless network, she does not even have a chance to enter her username and password. Instead, her Windows Wireless Zero Configuration utility reports that it cannot find a certificate. What is the problem?
- A. The user's account in your network's directory server is misconfigured or deactivated.
  - B. The user's station does not trust the digital certificate of your network's RADIUS server.
  - C. The user must configure her username and password in a policy before attempting to connect to the network.
  - D. The Wireless Zero Configuration utility is configured for the wrong Extensible Authentication Protocol (EAP) method.
8. What should you do if you forget your manager password to the Wireless Edge Services Module's Web browser interface?
- A. Access your operator account and change the manager password.
  - B. Press the Clear button on the front of the module to clear the password.
  - C. Press the Reset button on the front of the module to reset to factory default settings.
  - D. Access the module's CLI through the wireless services-enabled switch and change the password.

## Mobility Answers:

1. D
2. C
3. A
4. D
5. B
6. C
7. D
8. D